

Description: Standards / Verticals

Use: Standards are the vertical members of Ringlock scaffolding. They provide the vertical support for scaffolding.

Material: High strength low alloy structural steel

Finish: Hot dipped galvanized



STANDARDS/ VERTICALS (WITH BOLTED SPIGOT)

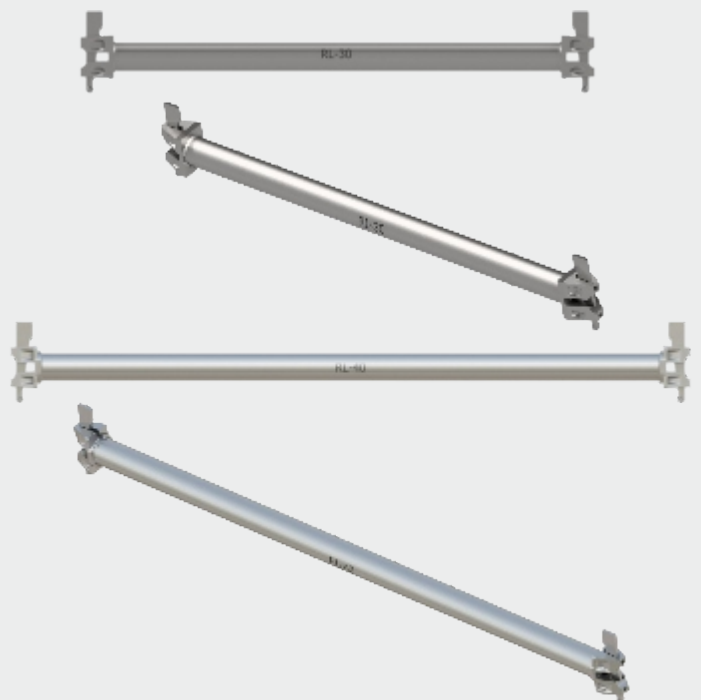
PRODUCT CODES	SIZE	WEIGHT IN KGS	WEIGHT IN LBS
RLV-30	3.0 m. (9'-10")	14.8	32.5
RLV-25	2.5 m. (8'-2")	12.4	27.3
RLV-20	2.0 m. (6'-6")	10.1	22.2
RLV-15	1.5 m. (4'-11")	7.8	17.2
RLV-10	1.0 m. (3'-3")	5.5	12.1
RLV-05	0.5 m. (1'-7")	3.2	7.1

Description: Ledger / Horizontals

Use: Ledgers are the horizontal members of Ringlock scaffolding. They provide horizontal support for loads and planks. Ledgers can also be used as mid rail and top or hand guard rails.

Material: High strength low alloy structural steel

Finish: Hot dipped galvanized



HORIZONTAL / LEDGER (IMPERIAL SIZES)

PRODUCT CODES	SIZE	WEIGHT IN KGS	WEIGHT IN LBS
RL-20	0.610 m. (2'-0")	3.13	6.89
RL-30	0.914 m. (3'-0")	4.28	9.42
RL-36	1.067 m. (3'-6")	4.85	10.67
RL-40	1.219 m. (4'-0")	5.42	11.92
RL-50	1.524 m. (5'-0")	6.56	14.43
RL-60	1.829 m. (6'-0")	7.7	16.94
RL-69	2.072 m. (6'-9")	8.61	18.94
RL-70	2.133 m. (7'-0")	8.83	19.43
RL-80	2.438 m. (8'-0")	9.97	21.93
RL-90	2.743 m. (9'-0")	11.1	24.42
RL-100	3.048 m. (10'-0")	12.4	27.28

Description:

Diagonal Brace / Bay Brace

Use:

Diagonal braces are used for the lateral bracing Ringlock scaffolding. Bay braces can also be used as obtuse angle mid rail and top or hand guard rails in conjunction with TECHNOCRAFTS stair system.

Material:

High strength low alloy structural steel

Finish:

Hot dipped galvanized

DIAGONAL BRACE (IMPERIAL SIZES)

PRODUCT CODES	BAY SIZE IN MM	EFF. LENGTH IN MM	WEIGHT IN KGS	WEIGHT IN LBS
RDBB-30	914.4 X 2000	2140.0	8.14	17.9
RDBB-36	1067.0 X 2000	2199.0	8.32	18.3
RDBB-40	1219.2 X 2000	2266.0	8.52	18.7
RDBB-50	1524.0 X 2000	2425.0	9.0	19.8
RDBB-60	1829.0 X 2000	2609.0	9.52	20.9
RDBB-70	2133.0 X 2000	2815.0	10.17	22.4
RDBB-80	2438.0 X 2000	3037.0	10.8	23.8
RDBB-90	2743.0 X 2000	3272.0	11.5	25.3
RDBB-100	3048.0 X 2000	3519.0	12.2	26.7
RDBB-310	1168.0 X 2000	2243.0	8.44	18.6



Description: Board Brackets

Use:

Board brackets are used at the edge of a scaffolding to extend the reach or extension off of any side of the scaffolding where sunshade comes.

Material:

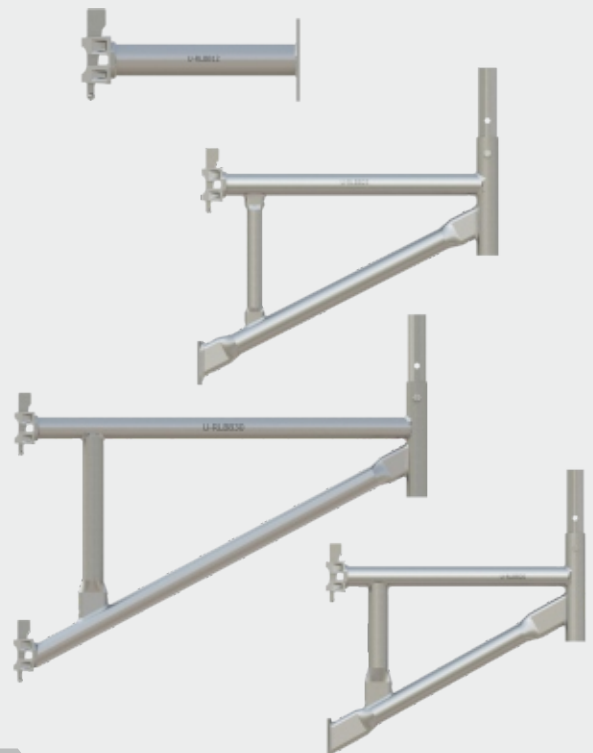
High strength low alloy structural steel

Finish:

Hot dipped galvanized

SIDE BOARD BRACKET

PRODUCT CODES	STEEL PLANKS	SIZE	WEIGHT IN KGS	WEIGHT IN LBS
RLBB12	1 SSP	12"	2.0	4.4
RLBB20	2 SSP	24"	7.95	17.5
RLBB30	3 SSP	36"	10.9	24.1
RLBB36	3 SWP	42"	11.9	26.1



Description: Clamp On Leg Assembly / Spigot Adaptor Clamp (I-Bolt)

Use: The Spigot Adaptor Clamp (I-Bolt) allows the connection of Ringlock standards at intermediate locations along the length of Tubular ledgers, Truss Ledgers and Lattice Girders.

Material: Structural steel

Finish: Hot dipped galvanized



CLAMP ON LEG ASSEMBLY / SPIGOT ADAPTOR CLAMP (I-BOLT).

PRODUCT CODES	WEIGHT IN KGS	WEIGHT IN LBS
RLVC	1.71	3.76

Description: Base Collar

Use: The base collar is connected at one of the many bases i.e., base plate, screw jack or swivel jack and provides a base rosette to begin Scaffold construction.

Material: High strength low alloy structural steel

Finish: Hot dipped galvanized



BASE COLLAR

PRODUCT CODES	WEIGHT IN KGS	WEIGHT IN LBS
RLBC	1.71	3.76

Description: Ringlock System Suspended bracket

Use: The suspended bracket, used in pairs only, is designed to attach to the bottom rosette of the top standard and to the top rosette of the bottom standard. This joints the standards together in preparation for suspended scaffold applications.

Material: Structural steel

Finish: Hot dipped galvanized



RINGLOCK SYSTEM SUSPENDE BRACKET / LEG LOCK

PRODUCT CODES	WEIGHT IN KGS	WEIGHT IN LBS
RLSB	3.1	6.82

Description:

Double Ledgers

Use:

Double ledgers are horizontal members of Ringlock scaffolding that allow for increased load carrying capacities not possible with single tube or regular duty ledgers. They provide increased horizontal support for loads and planks.

Material:

High strength low alloy structural steel

Finish:

Hot dipped galvanized



DOULBE LEDGER (IMPERIAL SIZE)

PRODUCT CODES	SIZE	WEIGHT IN KGS	WEIGHT IN LBS
RDL-60	6'-0" (1.829 m.)	14.5	31.9
RDL70	7'-0" (2.133 m.)	16.8	36.9
RDL80	8'-0" (2.438 m.)	19.0	41.8
RDL90	9'-0" (2.743 m.)	21.7	47.8
RDL100	10'-0" (3.048 m.)	23.9	52.6

Description: Lattice Girder

Use:

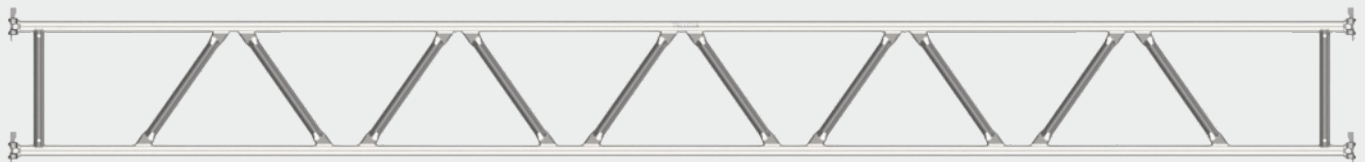
Lattice girders are horizontal members of Ringlock scaffolding that allow for scaffolding over large spans or gaps of 14' / 4.267 m. - 28' / 8.53 m.

Material:

High strength low alloy structural steel

Finish:

Hot dipped galvanized



LATTICE GIRDER

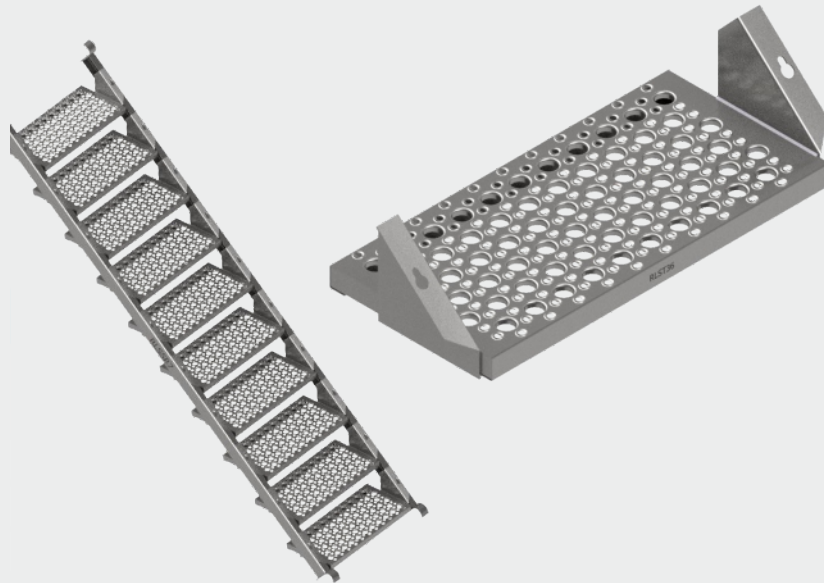
PRODUCT CODES	SIZE	WEIGHT IN KGS	WEIGHT IN LBS
RLG14	14'-0"	46.0	101.3
RLG21	21'-0"	59.0	152.0
RLG28	28'-0"	93.0	204.6

Description: Steel Stair Stringer and Stair Tread

Use: Stairs units are used in Stair case tower where person can safely reach at required level.

Material: Steel

Finish: Hot Dip Galvanized.



STAIR TREAD

PRODUCT CODES	SIZE	WEIGHT IN KGS	WEIGHT IN LBS
CST-36	3'-6"	6.0	13.2

STEEL STAIR UNITS (HOT DIP GALVANIZED FINISH)

PRODUCT CODES	BAY SIZE LENGTH	BAY SIZE WIDTH	NO. OF STINGERS	NO. OF STAIR TREAD	WEIGHT IN KGS	WEIGHT IN LBS
RLSS70	7'-0"	3'-0"	1 LH + 1 RH	10	103.6	227.9

Description: Steel Ladder

Use: Steel ladders are used for climbing on erected scaffold.

Material: Structural steel

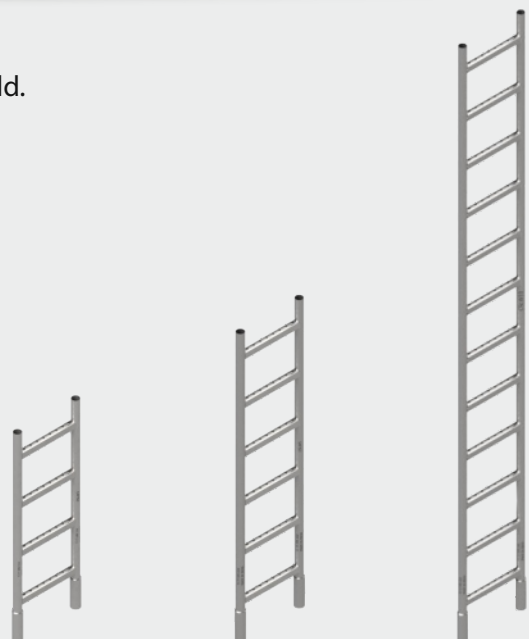
Finish: Hot dipped galvanized

STEEL LADDER-WIDE (ANTI-SLIP RUNG)

PRODUCT CODES	SIZE	WEIGHT IN KGS	WEIGHT IN LBS
CSLW3AS	3'/1.0 m.	6.6	14.5
CSLW5AS	5'/1.5 m.	9.5	20.8
CSLW10AS	10'/3.0 m.	18.0	39.6

STEEL LADDER-WIDE (TUBULAR RUNG)

PRODUCT CODES	SIZE	WEIGHT IN KGS	WEIGHT IN LBS
CSLW3	3'/1.0 m.	7.6	16.7
CSLW5	5'/1.5 m.	11.0	24.2
CSLW10	10'/3.0 m.	20.0	44.0



Description: Guard Rail Gate Expandable – 3’ (914.4mm)

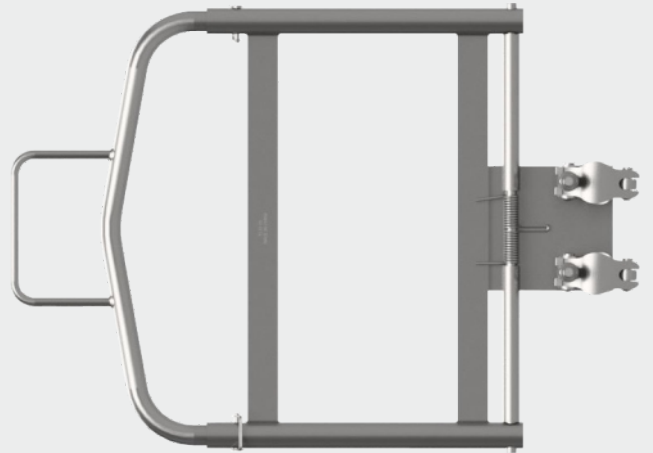
Use: Gates allow safe ladder access to and from the working platform. The spring gate mechanism ensures that the access opening remains fully closed at all times.

Material: Structural steel

Finish: Hot Dip Galvanized / Red colour Powder coated

GUARD RAIL GATE EXPANDABLE- 3’ (914.4 mm)

PRODUCT CODES	MAX. EXTEND LENGTH	MIN. CLOSE LENGTH IN MM	WEIGHT IN KGS	WEIGHT IN LBS
CGRGTE-EX-G	3'-0" (914.4 mm)	687.0	9.38	20.64



Description: Ladder Bracket

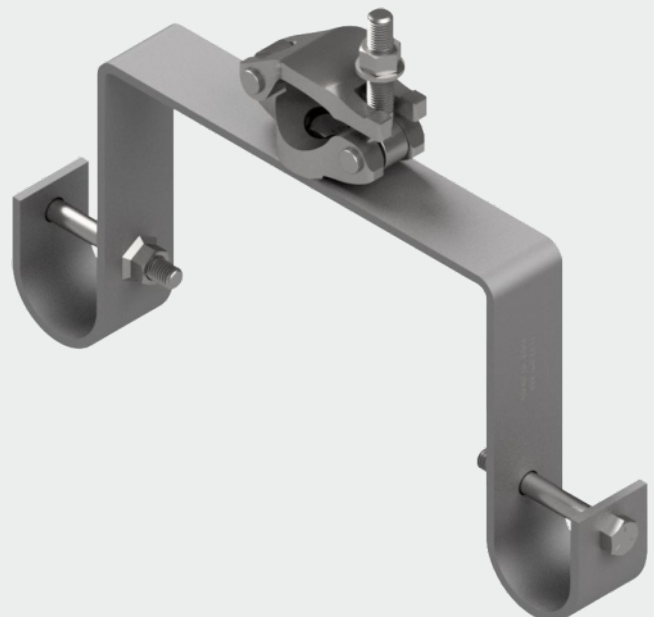
Use: Ladder brackets are used for holding the ladder in vertical direction by supporting with vertical pipe.

Material: Structural steel

Finish: Zinc plated / Hot Dip Galvanized

LADDER BRACKET

PRODUCT CODES	WEIGHT IN KGS	WEIGHT IN LBS
CSLBW	3.2	7.0

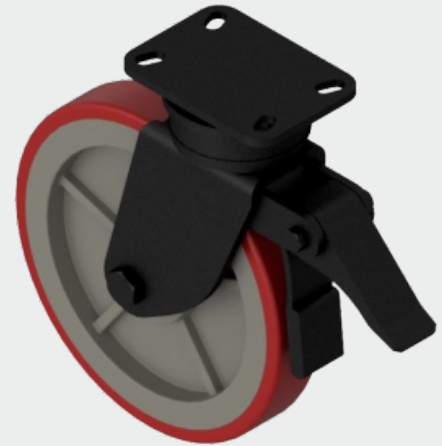


Description: 12" Caster

Use: The scaffold caster is used as a rolling base. It allows the scaffold to be moved to different locations without disassembling the scaffold.

Material: High strength low alloy structural steel, rubber/polyurethane wheels

Finish: Electroplated and powder coated



12" CASTER WHEEL (WITH BRAKE)
MAX. ALLOW LOAD CAPACITIES:- 1200 LBS

PRODUCT CODES	SIZE	WEIGHT IN KGS	WEIGHT IN LBS
CR12	12"	10.4	22.8

Description: Ringlock Caster Adaptor

Use: The caster adaptor is used as a base connection point to a caster and provides a base rosette to begin scaffold construction.

Material: High strength low alloy structural steel

Finish: Hot dipped galvanized



RINGLOK CASTER ADAPTOR

PRODUCT CODES	WEIGHT IN KGS	WEIGHT IN LBS
RCA	4.4	9.7

Description: Adjustable Screw Jack

Use: The screw jack is used as a starting base for a scaffold. It has an adjustable height to allow for compensation on uneven levels, so that a level scaffold is always attainable. Any scaffold base should always be placed atop mudsills that are on proven solid ground.

Material: High strength low alloy structural steel

Finish: Zinc plated / Hot Dip Galvanized



ADJUSTABLE SCREW JACK

PRODUCT CODES	SIZE (MM)	WEIGHT IN KGS	WEIGHT IN LBS
SJB	36.5 Dia x 610 Lg.	4.1	9.1

Description: Adjustable Swivel Jack

Use: The screw jack is used as a starting base for a scaffold where the supporting surface of the scaffold is on a slope.

Material: High strength low alloy structural steel

Finish: Zinc plated / Hot Dip Galvanized



ADJUSTABLE SWIVEL JACK

PRODUCT CODES	Ø SIZE	WEIGHT IN KGS	WEIGHT IN LBS
SJS	1.435" (36.5 mm)	5.1	11.2

Description: Ringlock System Davit Arm

Use: The davit Arm is designed to support a Gin Wheel for lifting light loads or to serve as a tie off point for a retractable lifeline.

Material: Structural steel

Finish: Hot dipped galvanized

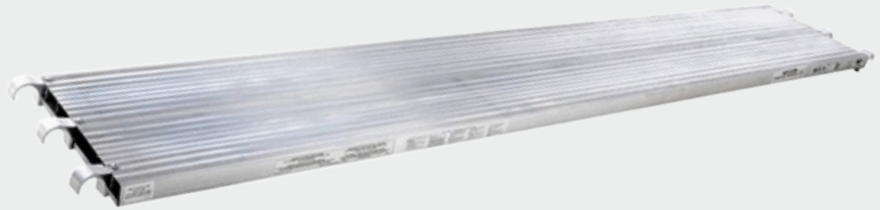
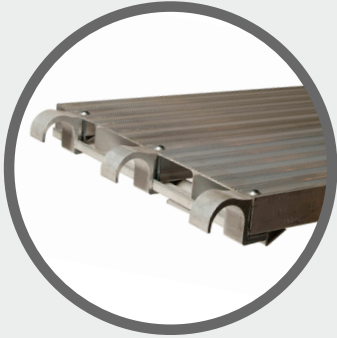


RINGLOCK SYSTEM DAVIT ARM

PRODUCT CODES	WEIGHT IN KGS	WEIGHT IN LBS
RLDA	11.5	25.3

Description: Aluminum Plank

Use: 7' have a 75 lbs per square foot & 10' have a 50 lbs per square foot load rating. Evenly Distributed



ALUMINUM PLANK

PRODUCT CODES	WIDTH	LENGTH	TYPE	WEIGHT IN KGS	WEIGHT IN LBS
APA7	19.25"	7'-0"	All Aluminum Walk-board	13.3	29.31
APA10	19.25"	10'-0"	All Aluminum Walk-board	18.5	40.77

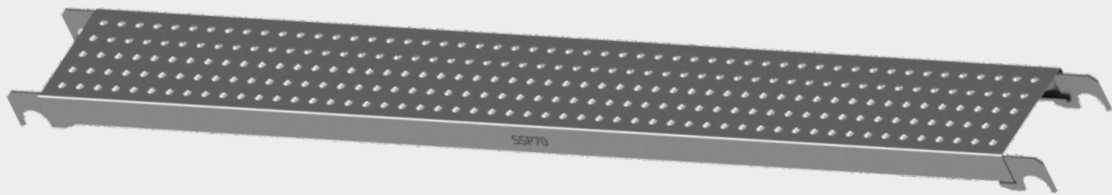
Description: SSP Type steel plank

Use: Steel planks are having anti-slip type boards and used in scaffold.

Material: Q.235 / S.235 / EQUIVALENT

Plank Width 9" / 228.6 mm

Finish: Hot dipped galvanized



SSP TYPE STEEL PLANK (IMPERIAL SIZE)

PRODUCT CODES	SIZE IN FEET & INCH	EFFECTIVE LENGTH	WEIGHT IN KGS	WEIGHT IN LBS
SSP30	3'-0"	914.4	7.11	15.65
SSP36	3'-6"	1,066.8	8.05	17.71
SSP40	4'-0"	1,219.2	8.99	19.77
SSP50	5'-0"	1,524.0	10.86	23.90
SSP60	6'-0"	1,828.8	12.74	28.02
SSP70	7'-0"	2,133.6	14.61	32.14
SSP80	8'-0"	2,438.4	16.48	36.26
SSP90	9'-0"	2,743.2	18.36	40.39
SSP100	10'-0"	3,048.0	20.23	44.51