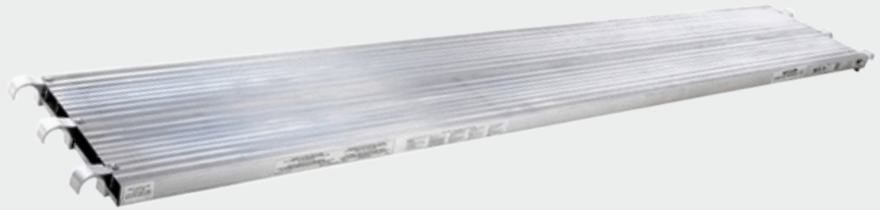
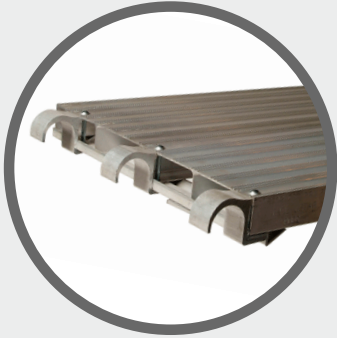


Description: Aluminum Plank

Use: 7' have a 75 lbs per square foot & 10' have a 50 lbs per square foot load rating. Evenly Distributed



ALUMINUM PLANK

PRODUCT CODES	WIDTH	LENGTH	TYPE	WEIGHT IN KGS	WEIGHT IN LBS
APA7	19.25"	7'-0"	All Aluminum Walk-board	13.3	29.31
APA10	19.25"	10'-0"	All Aluminum Walk-board	18.5	40.77

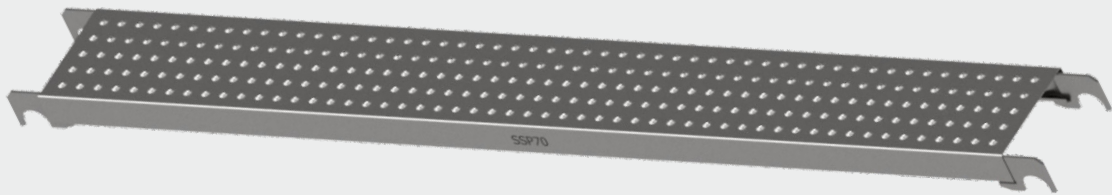
Description: SSP Type steel plank

Use: Steel planks are having anti-slip type boards and used in scaffold.

Material: Q.235 / S.235 / EQUIVALENT

Plank Width 9" / 228.6 mm

Finish: Hot dipped galvanized



SSP TYPE STEEL PLANK (IMPERIAL SIZE)

PRODUCT CODES	SIZE IN FEET & INCH	EFFECTIVE LENGTH	WEIGHT IN KGS	WEIGHT IN LBS
SSP30	3'-0"	914.4	7.11	15.65
SSP36	3'-6"	1,066.8	8.05	17.71
SSP40	4'-0"	1,219.2	8.99	19.77
SSP50	5'-0"	1,524.0	10.86	23.90
SSP60	6'-0"	1,828.8	12.74	28.02
SSP70	7'-0"	2,133.6	14.61	32.14
SSP80	8'-0"	2,438.4	16.48	36.26
SSP90	9'-0"	2,743.2	18.36	40.39
SSP100	10'-0"	3,048.0	20.23	44.51